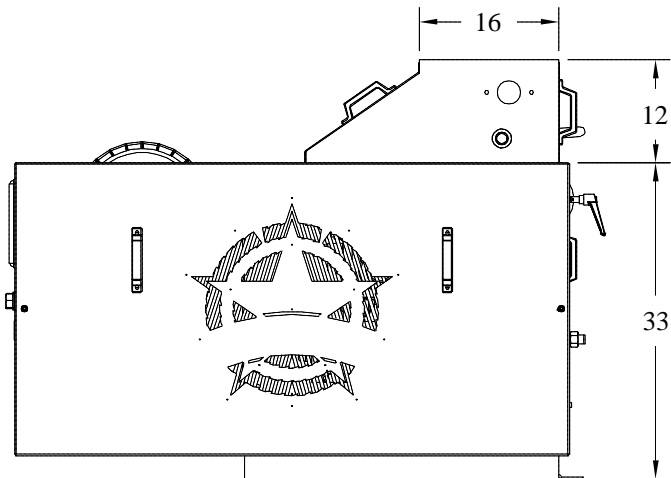
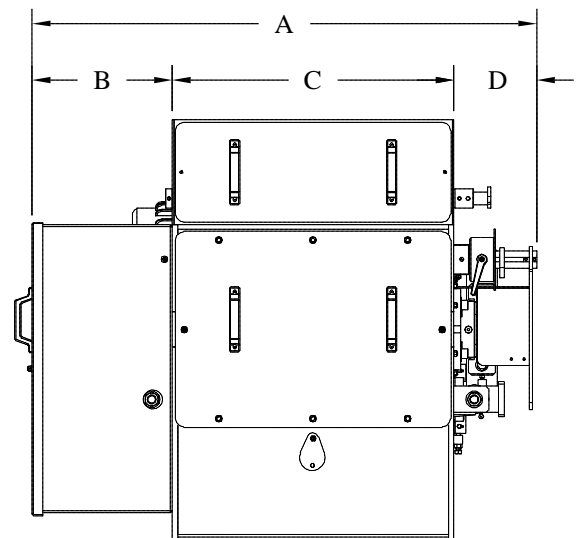


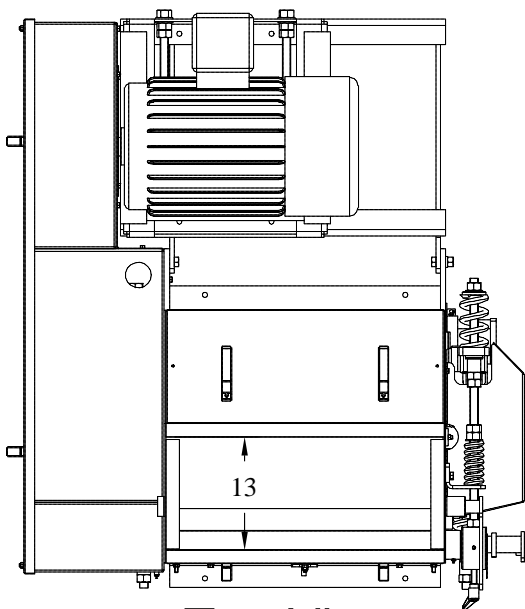
12" Single Dimensions



Right View

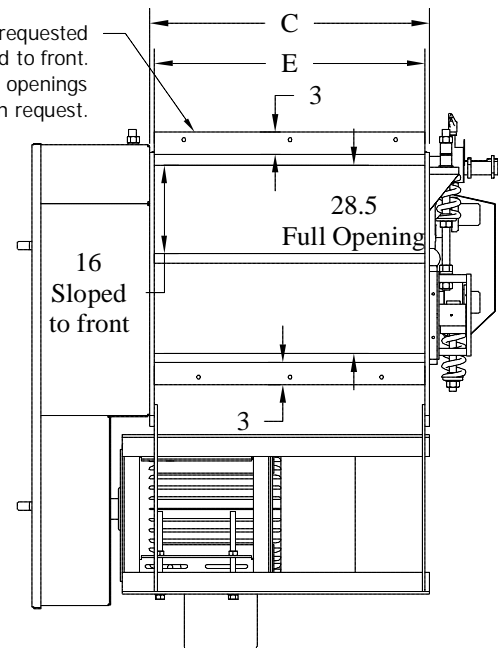


Front View



Top View

*Full opening, unless requested sloped to front.
-Can also do custom openings upon request.



Bottom View

Mill Size	Overall Mill	Left Beltguard	Mill Frame	Right Cover	Output Opening	Weight W/ Motor	Weight WO/ Motor
	A	B	C	D	E		
12 X 24	58.25	16	26.25	9	25	3,600 Lbs	3,118 Lbs
12 X 30	64.25	16	32.25	9	31	4,640 Lbs	4,045 Lbs
12 X 36	70.25	16	38.25	9	37	5,200 Lbs	4,566 Lbs
12 X 42	76.25	16	44.25	9	43	6,650 Lbs	5,605 Lbs
12 X 52	86.25	16	54.25	9	53	7,200 Lbs	6,155 Lbs
12 X 72	106.25	16	74.25	9	73	8,900 Lbs	7,160 Lbs